

# State and National Standards Driving Utility Emergency Management in California

Workshop 1

**Donald Daigler**

Emergency Preparedness OIR (R.15-06-009)

June 26, 2018

# Overview of SCE

- 14 million people
- 180 incorporated cities
- 15 counties
- 125 years of reliable electric service
- One of the nation's largest IOU's
- 50,000 square miles of service area
- 5,000 large businesses
- 280,000 small businesses
- Leader in alternative/renewable energy
- Focus on employee/public safety



# SCE's Compliance with §768.6 Requirements

Weather Reporting



Mitigation



Community Meetings



Emergency Plans



**Southern California Edison**  
**2017 Storm Response Plan**

# Impact Scale & Complexity



**LOCAL**

City / County

**STATE**

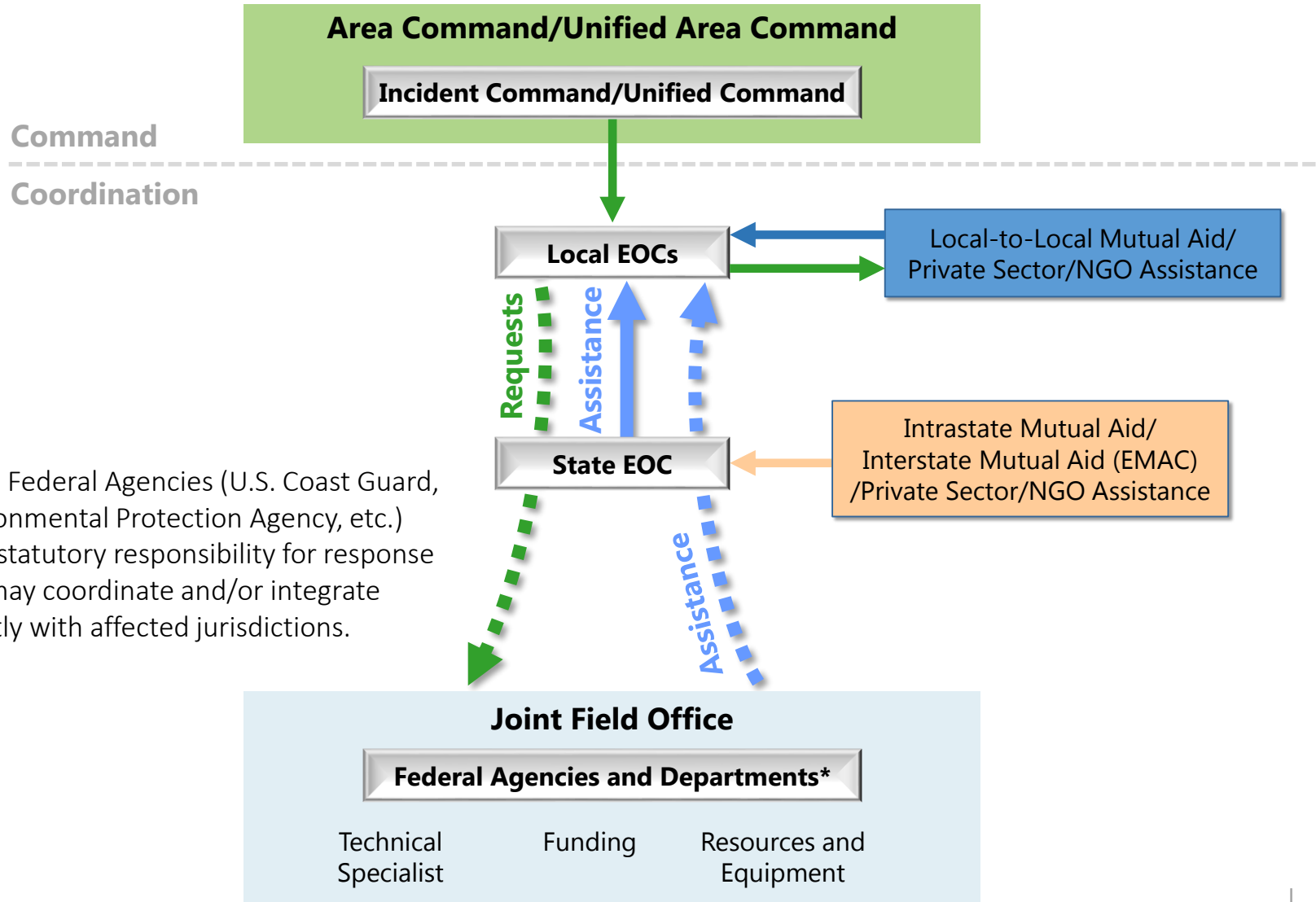
Regional

**NATIONAL**

<b>Scenario &amp; Impacts</b> <b>Organizations Involved</b> <b>Coordination</b>	<ul style="list-style-type: none"> <li>Wildfire</li> <li>Windstorm</li> <li>Minor Flood</li> <li>Small Earthquake</li> <li>Internal Network Outage</li> <li>Security Breach</li> </ul>	<ul style="list-style-type: none"> <li>Earthquake (5.0 – 6.0)</li> <li>Major Flood</li> <li>Widespread &amp; prolonged customer impact 3-5 days</li> <li>Large wildfire impacting residential community</li> </ul>	<ul style="list-style-type: none"> <li>Terrorist Attack</li> <li>Earthquake (above 6.0)</li> <li>Multiple Floods &amp; levee breaches</li> <li>Extended outage 7+ days</li> </ul>
	<ul style="list-style-type: none"> <li>Local First Responders</li> <li>City/County emergency management community</li> <li>Potential for some state agency involvement (fire)</li> </ul>	<ul style="list-style-type: none"> <li>State emergency management agencies</li> <li>Red Cross / non-profits</li> <li>FEMA Regional awareness</li> </ul>	<ul style="list-style-type: none"> <li>Federal Agency involvement</li> <li>Red-Cross &amp; other Non-profits</li> <li>Faith-based community</li> <li>Neighboring states</li> </ul>
	<ul style="list-style-type: none"> <li>City/County EOCs</li> <li>Local plans executed</li> <li>No mutual assistance</li> <li>All Resource Requirements are met</li> </ul>	<ul style="list-style-type: none"> <li>State and regional EOCs</li> <li>State-level mutual aid &amp; assistance</li> </ul>	<ul style="list-style-type: none"> <li>Complex levels of coordination across multiple jurisdictions and different levels of gov't</li> <li>Extensive mutual aid &amp; assistance</li> </ul>



# Integrated Response & Coordination



Some Federal Agencies (U.S. Coast Guard, Environmental Protection Agency, etc.) have statutory responsibility for response and may coordinate and/or integrate directly with affected jurisdictions.

# Applying National Doctrine to Utilities



*National*

*State*

*Local*

**?**  
*Utilities*

# Overview: SCE Incident Management

## ICS Implementation

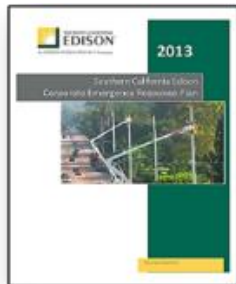
### Attributes

- Common terms
- Standard structures, processes and forms
- Tailorable/Scalable

### Operations



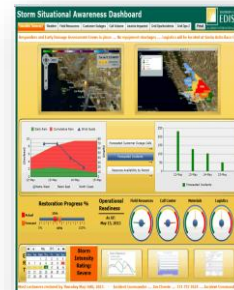
### Planning



### Process



### Technology



### Trainings & Exercises



# Utilizing NIMS in Utility Emergency Planning

Adopt Public Sector Planning & Preparedness Frameworks

Organize like the public sector

Train like the public sector

Practice like the public sector

**The National Planning System Implemented**

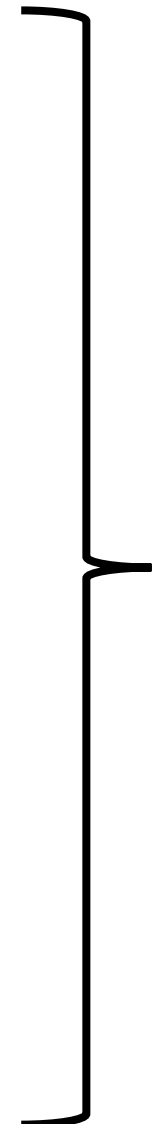
**SCE Response Structure**

**Training Requirements**

Level	Focus	Courses
Executives	<ul style="list-style-type: none"> <li>Strategic level engagement</li> <li>Informs corporate-level policy</li> <li>Maintains operational continuity of non impacted OUs</li> </ul>	<ul style="list-style-type: none"> <li>ICS Awareness</li> <li>Comms equipment</li> </ul>
Command & General Staff	<ul style="list-style-type: none"> <li>Core of emergency management</li> <li>Establishes operational incident objectives</li> </ul>	<ul style="list-style-type: none"> <li>Full ICS curriculum</li> <li>Leadership training</li> <li>Comms equipment</li> </ul>
Impacted Organizational Units	<ul style="list-style-type: none"> <li>Ensures business continuity &amp; disaster recovery</li> <li>Executes tactical response</li> <li>Field-level alignment</li> </ul>	<ul style="list-style-type: none"> <li>Basic ICS</li> </ul>

**Drills & Exercises**

Evaluating the ability of IMTs & Continuity Teams to execute



Respond and integrate with public sector emergency response entities



# QUESTIONS?

Donald Daigler  
Director, Business Resiliency  
[Donald.Daigler@sce.com](mailto:Donald.Daigler@sce.com)