

CASF Application – Lava Lakes

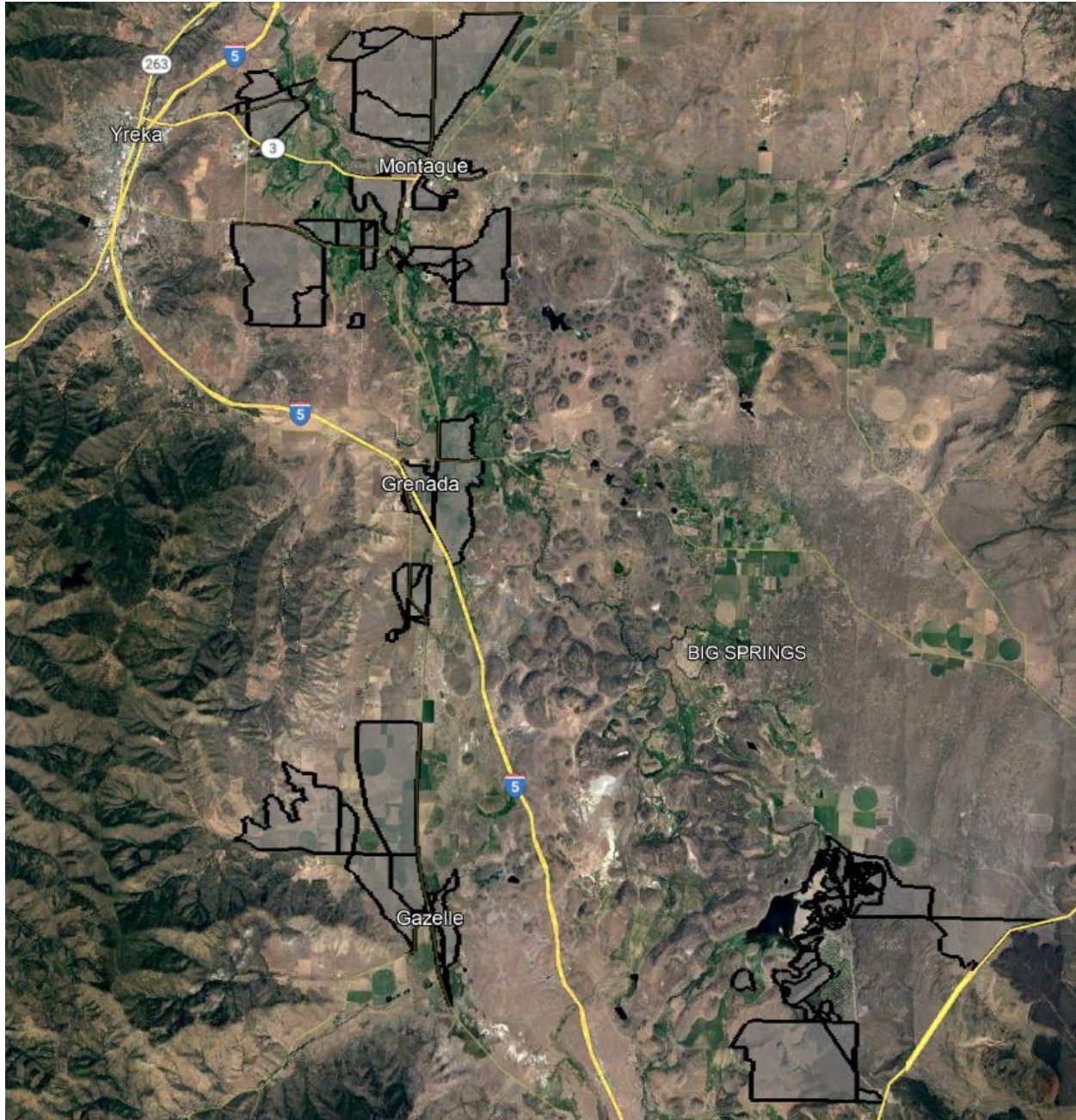
Project Summary

Applicant:	Digital Path, Inc. d/b/a DigitalPath, Inc. #1151
Contact:	Andrew Cardin Senior Vice President of Operations acardin@digitalpath.com
Project Title:	Lava Lakes
Location:	Montague, Grenada, Gazelle, Lake Shastina – Siskiyou County
Type:	hybrid last-mile/middle mile
Grant Funds Requested:	\$1,090,723

Project Area Map



California Interactive Broadband Map – Lava Lakes, Siskiyou County



Census Block Boundaries

The Lava Lakes CASF Project will provide service to 400 Priority Eligible locations and 203 Eligible locations. 603 total locations.

Census Blocks:

60930003002111	60930009012013	60930007014043	60930009022049
60930007011011	60930003002059	60930009022033	60930009022054
60930009023042	60930007014034	60930009022048	60930007011054
60930009023067	60930007014057	60930007014067	60930007011036
60930003003049	60930009022067	60930007014069	60930009022020
60930007011019	60930009022019	60930009022013	60930009023013
60930007014033	60930007014051	60930003002054	60930009022071
60930003002058	60930009022027	60930009023019	60930007014008
60930007011034	60930007014058	60930009022059	60930003003055
60930009012014	60930009022042	60930009022028	60930007011013
60930003001254	60930009022018	60930009022023	60930003002074
60930003003072	60930009022021	60930009023035	60930009023020
60930007014041	60930003003051	60930009022052	60930007013057
60930003003064	60930007011000	60930009022055	60930007014015
60930007013055	60930009022022	60930009023015	60930007014022
60930003002077	60930009022030	60930009022012	60930003002088
60930007011032	60930003002057	60930009022035	60930007014032
60930007023017	60930009022031	60930009022014	60930007011022
60930007023011	60930009022038	60930009022025	60930007014001
60930007014064	60930009022024	60930003001261	60930009022073
60930007014052	60930009022016	60930009022069	60930003003044
60930007011018	60930009022070	60930007023019	60930009022056
60930007023018	60930009022065	60930009022041	60930007011027
60930003003065	60930009022043	60930009022058	60930007011009

Zip Codes:

96034, 96038, 96064, 96094, 96097

According to the data available through the California Interactive Broadband Map:

61 locations have access equal to or less than 10 Mbps Down / 1 Mbps Up and 542 locations have access at less than 25 Mbps Down / 3 Mbps Up. This project will make speeds available of 100 Mbps downstream and 20 Mbps upstream.

The median household income of the project area is \$55,372.

There are no Community Anchor Institutions identified within the project area.

There is no major infrastructure proposed in this Project.

The major equipment associated with this project is:

- High-capacity access points, generators, licensed microwave links.

Construction will take less than 18 months to complete.

The Lava Lakes Project is a hybrid last-mile/middle mile fixed wireless deployment utilizing 3 existing towers to deliver service to the households covered by this project.

Once completed, locations covered in this Project will have access to download speeds of 100 Mbps and upload speeds of 20 Mbps. Additional service tiers will be available.

Digital Path, Inc. believes this project to be categorically exempt from CEQA requirements based on the use of existing facilities and local building requirements.

Digital Path, Inc. is not disputing the California Interactive Broadband Map depiction of served status for the locations in this application.

Digital Path, Inc. is not seeking Ministerial Review.

The Middle-Mile component of this project will use licensed microwave links to interconnect the tower sites with an existing fiber connection. The Middle-Mile licensed microwave links are an indispensable part of the project due to the remoteness of the area and lack of available middle-mile connections. DigitalPath, Inc. accepts the open access requirements associated with the middle-mile component of this Project. Once the statewide open-access middle mile network becomes available, it will be connected to.