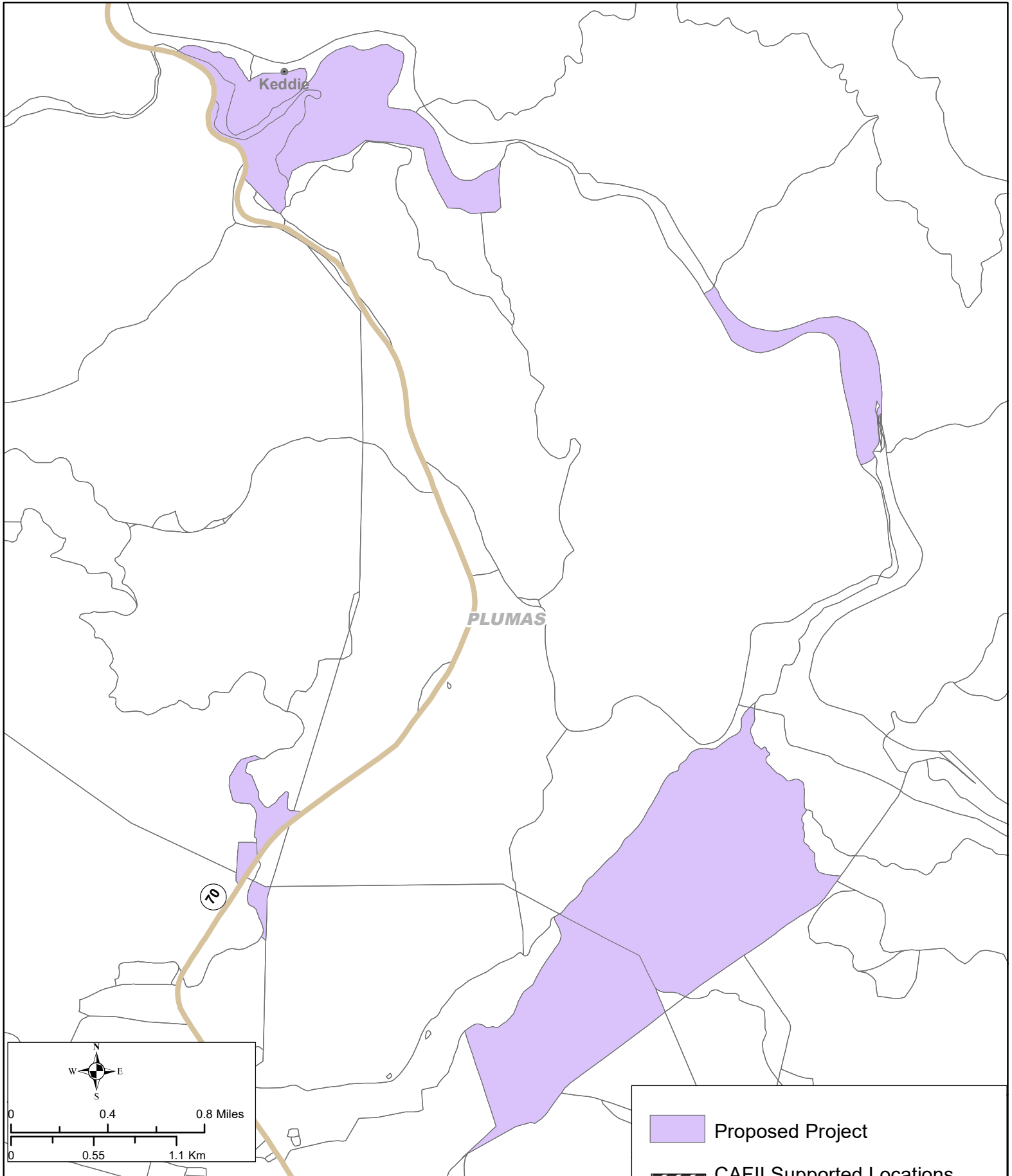
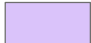





STATE OF CALIFORNIA Plumas Sierra CASF Infrastructure Grant Application Keddie - May 1, 2019



Data Source:
Service availability data submitted by California broadband providers and validated by the CPUC. Data as of December 31, 2017.
Map created by the CPUC, Communications Division, CASF Infrastructure Group, May 14, 2019.

-  Proposed Project
-  CAFII Supported Locations
CAFII Provider - None