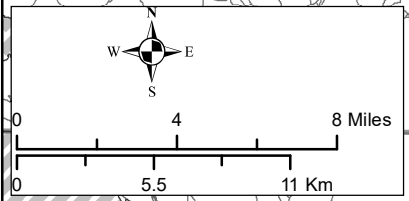
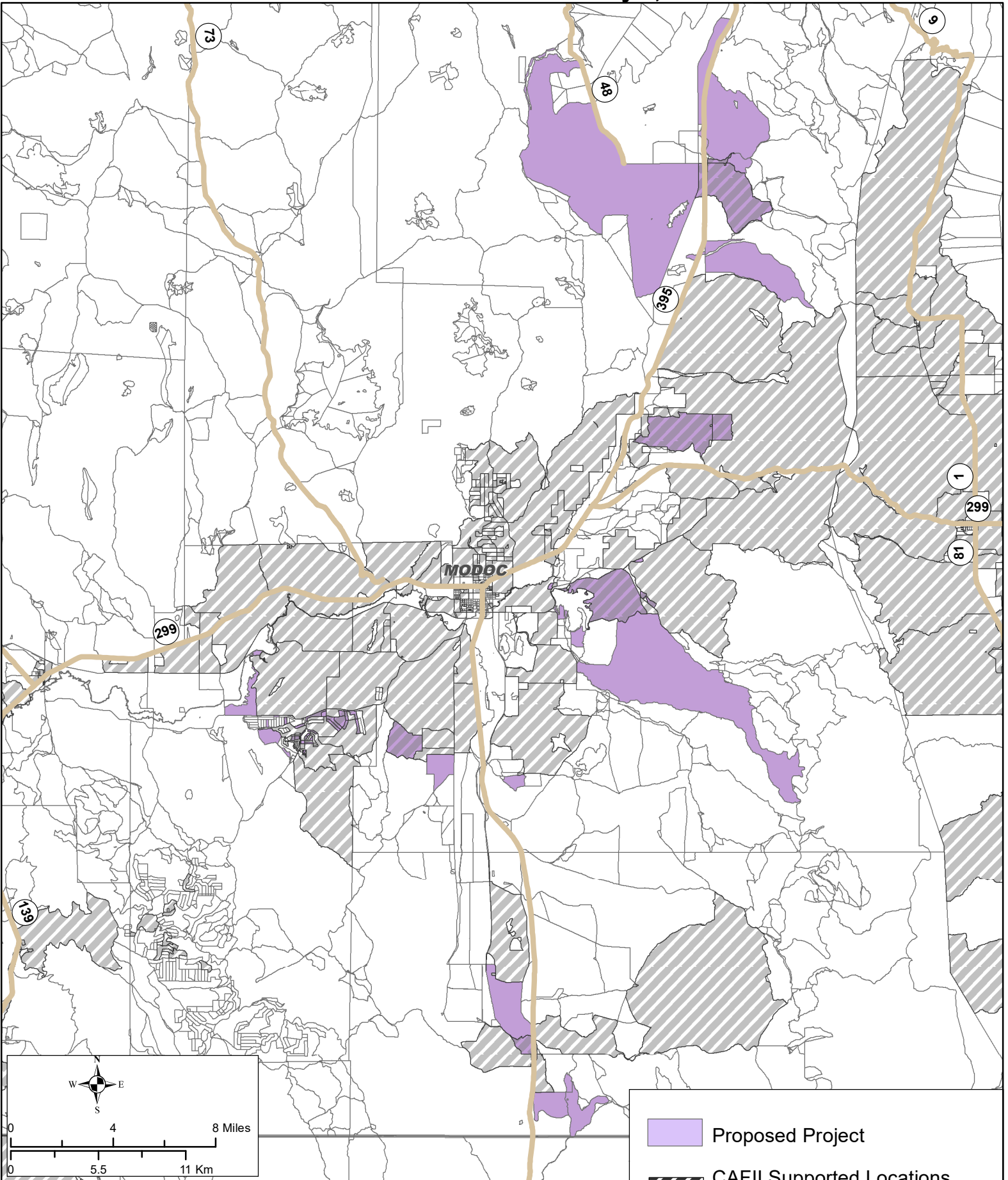


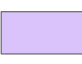



STATE OF CALIFORNIA

Frontier CASF Infrastructure Grant Application

Northeast - Alturas - May 1, 2019



 Proposed Project

 CAFII Supported Locations
CAFII Provider - Frontier

Data Source:
Service availability data submitted by California broadband providers and validated by the CPUC. Data as of December 31, 2017.
Map created by the CPUC, Communications Division, CASF Infrastructure Group, May 13, 2019.